

# Expansion of Intermittent Renewables: Strategies, pass-through costs, and welfare distribution

Gloria Colmenares, Dominik Schober and Andreas Löschel \*

November 2021

We investigate technology as a source of product differentiation and its impact on strategic behavior and wealth distribution in the German day-ahead market. We compare the performance of our model to a benchmark, using elasticity-adjusted markups and without bid data. We represent uncertainty on the demand side as an intermittency of renewables or a flexible demand response. In a system with 33% renewable shares, both model estimates converge at off-peak hours, being robust to ramping cost and renewable forecast assumptions. Producers pass on fuel and CO<sub>2</sub> costs differently with implications for reinforced regulations by the European Emissions Trading Scheme. Implications for counterfactuals with carbon costs up to €100/tCO<sub>2</sub> are also discussed. *JEL D22, L13, L94*

---

\*Colmenares: University of Münster, Center of Applied Economic Research Münster (CAWM), Am Stadtgraben 9, 48143 Münster, Germany, g\_colm01@uni-muenster.de Schober: Leibniz-Zentrum für Europäische Wirtschaftsforschung GmbH (ZEW), 68161 Mannheim, Germany, schober@zew.de Löschel: University of Münster, Center of Applied Economic Research Münster (CAWM), loeschel@uni-muenster.de. For significant and helpful discussions, we thank Frank A. Wolak and participants at the 8th Mannheim Energy Conference, the IFO Summer School, the EMEE 13th Workshop of Empirical Methods in Energy Economics at ETH Zürich, the Institut d’Economia de Barcelona, the Chair of Climate and Energy Policy of the Potsdam Institute for Climate change (PIK), and the OSWEET Seminar. Any remaining errors belong to the authors.

To what extent do low-carbon technologies (and incentives) change the behaviors of firms? In what ways do directed low-carbon technologies impact the pass-through of carbon costs? What do distributive effects derived from the use of low-carbon technologies look like? As we move towards low-carbon energy systems, answers to these questions are necessary in order to inform ambitious climate policy targets. Traditionally, sound methodological approaches focus representing technologies on the supply side or the merit order, and firms usually compete on quantity [Acemoglu, Kakhbod, and Ozdaglar, 2017]. However, over the past decade, renewable zero-carbon technologies have been finding progressively more space in the merit order, benefiting from the preferential treatment by a mandatory offtake of feed-in regulation. Thus, analogous to an exogenous demand reduction, there are more instances of firms that produce energy with conventional plants, such as coal or gas, facing prices below marginal costs. In addition, the flexibility of commercial and household demand is currently experiencing a significant upturn. Hence, analyzing the heterogeneous effects of technology on demand and supply sides is essential to further understanding the transition to low-carbon energy systems.

Our paper puts forward a novel approach to representing technology; this model can also be used to approximate electricity systems that include a demand response in their operations. We derive our approach from empirical industrial organization models that measure the extent of market power and test their conduct parameters. We apply our model using as case study the German day-ahead electricity market during the third phase of the Emission Trading System (ETS). Operating under one of the most ambitious national climate targets within the European Union, firms in Germany need to adapt their bidding strategies under a uniform price scheme in order to thrive, as they are facing challenges from the massive amount of renewables entering the market. We thus use this case study to examine technology as a source of product differentiation.

Joskow and Schmalensee [1987] argue that *“Production technologies are straightforward and well understood”*. Traditionally, the mix of technologies making up the merit order has been represented as a set of discrete step functions, which can be used to solve equilibrium models with methods such as supply function equilibria (SFE), Cournot-Nash equilibrium, or various collusive equilibria. These identifications have been widely used to approximate the supply curve when bid data are available and power plants show seemingly low uncertainty levels of operational availability. And the rationale for using the Cournot model to fit generation behavior to firms is supported by the notion that *“market power on the part of sellers is the ability profitably to maintain prices above competitive levels by restricting output below competitive levels”* [Werden, 1996]. But, under the energy transition, electricity systems artificially restrict output from fossil fuels; they prioritize the use of electricity from renewables, which entails certain production, thereby pushing fossil fuels to the right of the merit order. This dynamic creates spaces in which prices are below competitive levels leaving room for the exploration of other kinds of behaviors. Moreover, understanding how more heterogeneous technologies might impact the elasticities of demand and supply at off-peak and peak hours is no longer straightforward. In this sense, our paper explores the research gap concerning the strategic implications and distributional impacts appearing as the result of directed efforts to propel the energy transition.

In Germany, the electricity sector is central to decarbonization packages proposed by climate policy. Climate policy in Germany can be subsumed under the generic term “energy system transformation” (“Energiewende”), which integrates various reform packages and laws. In general, the Energiewende largely addresses the transformation of energy conversion to carbon emission-free technologies, but it also includes providing ongoing support to more loosely related policies, such as the decommissioning of nuclear plants. The main pillars of this effort are supporting zero-emission

renewables (mainly wind and solar), coupling the electricity sector with the heating and transportation sectors and scaling down coal use, as well as demand-side policies such as increased efficiency of appliances, demand reduction and demand-side flexibility. Within the realm of the Energiewende, the German Federal Government has introduced targets to reduce carbon emissions by 90 percent, compared to 1990 levels, by 2050. In other words, by the mid-21st century, carbon emissions levels will be comparable to pre-industrial levels, such as those around 1850 [Gütschow, Jeffery, and Gieseke, 2019]. To achieve this target, Germany expects to increase its share of renewable energy -in gross power consumption- by a minimum of 35 percent by 2020, 50 percent by 2030, and 80 percent by 2050, among other sectoral targets. Under the Coal Exit plan, the federal government scheduled the retirement of lignite plants by 2038. Thereby, 3224 MW of a total of 8 units will leave by 2022, 6173 MW of a total of 11 units will leave by 2029, and 9242 MW of a total of 11 units by 2038 [Umweltbundesamt, 2020]. The Klimaschutzprogramm 2030 proposes a carbon price floor of 35 € per tCO<sub>2</sub> and a carbon price ceiling of 60 € per tCO<sub>2</sub> by 2026. It also expands the carbon pricing scheme to cover the transportation and heating sectors [Bundesregierung, 2020].

*Related literature.*- Our paper relates to the line of research in empirical industrial organization that approximates marginal cost estimates of industries which lack production costs (or bid) data, such as Rosse [1970] in the newspaper industry, Genesove and Mullin [1998] in the sugar industry, and Wolfram [1999] in the electricity industry. We also build on models that assume a functional form for an aggregate demand with differentiated products, a type of conduct, and a functional form for the supply side [Berry, Levinsohn, and Pakes, 1995]. To solve our simultaneous equation system [Koopmans, 1945], we rely on the generalized method of moments (GMM), as in Conlon and Gortmaker [2019]. With much different electricity market conditions to Britain, as studied by Wolfram [1999], we consider that the increasing uncertainty on the demand and production sides<sup>1</sup> due to the expansion of intermittent renewable technologies or due to flexible demand response in the future, give us sufficient reason to succumb to the temptation to fit the electricity day-ahead market into a Bertrand model with product differentiation (referred to as the Bertrand model, method, or equilibrium from here on). Doraszelski, Lewis, and Pakes [2018] fit the frequency regulation market in Britain, governed mainly by fossil fuel technologies, into a Bertrand model that approximates an uncertain demand using a logit functional form. Our model fits demand into a random logit that considers the load factor variable as random, and we include plants that operate with renewable technology. We also represent the supply side using a linear functional form, which gives us flexibility to estimate the pass-through of input costs. To assess the question of whether assuming a defined functional form on the demand side imposes too strong of an assumption that could limit the soundness of our model, we test it in a similar way as to Genesove and Mullin [1998], Bresnahan [1989], and Wolfram [1999]. Thus, we compare our model to the SFE method, which serves as a benchmark model. To further extend the pass-through insights of Fabra and Reguant [2014], our model generalizes the computation of equilibrium by accounting for endogenous changes, which also enables us to investigate the distributive effects of welfare. We can also directly compare our estimates to Hintermann [2016], who studied the pass through of CO<sub>2</sub> emissions costs in the German electricity day-ahead market during Phase 3 of the Emissions Trading System (ETS), using the SFE method and a reduced form of prices on marginal input costs. Regarding the distribution of welfare, we follow the theoretical implications in Weyl and Fabinger [2009] and Bulow and Klemperer [2009].

---

<sup>1</sup>In the future, renewable technologies could incorporate economic storage solutions in order to mitigate the intermittency of renewables.

Our results show that although magnitudes differ between both models, we find rather similar daily patterns, as both models converge at off-peak hours, thus supporting a monopolistic competitive equilibrium. The results were robust when we included ramping costs and renewables forecasts. This implies that producers react differently to changes in different cost categories, and compensate between fuel and CO<sub>2</sub> costs. Letting our model function as lower-bound estimates, consumers are better off under a counterfactual scenario with a carbon price floor up to €25/tCO<sub>2</sub>, but the higher burden of incidence still falls on producers, particularly at the morning peak. These findings suggest that a suitable form of compensation could be to transfer some of the CO<sub>2</sub> revenues to promote the upgrading or replacing of less flexible technologies, with more flexible ones.

The remainder of the article has the following structure. Section 1 summarizes the relevant electricity market characteristics in Germany, and the market data that enable us to construct the demand and supply sides. Section 2 describes the methodology we use for measuring the pass-through of input costs, test the conduct parameter, and assess welfare effects. Section 3 presents the results of this empirical study. Section 4 concludes by discussing further implications and the limitations.

## 1 Explaining the context and data

### 1.1 Market context

Total installed capacity in Germany at the beginning of 2018 was 217.6 GW, of which 112.5 GW, or roughly 52 percent, comprised renewable sources. Aggregate capacity supplied an electricity demand of 556.5 TWh. Generators can make independent or correlated decisions on three markets, so that the price signal is formed by the forward, day-ahead, and intraday markets. There are two ways to exchange electricity between generators and distributors, namely the over-the-counter (OTC) market and the exchange markets. The European Energy Exchange (EEX) operates the long-range and short-range forward markets. The long-range forward market accepts hourly average transactions from the previous month of delivery for up to 6 years, while the short-range forward market accepts hourly adjustments only during the month of delivery. The European Power Exchange (EPEX) operates the day-ahead and intraday markets 24/7. The intraday market functions the previous day of delivery up to 15 minutes before the actual delivery of electricity (and 5 minutes before delivery within the respective control zones). The balancing market allows for primary, secondary and tertiary control operations that have a bidding period of one week prior to delivery, with the exception of the minutes reserve market (secondary control energy), which is called for tender on a daily basis .

We study the German day-ahead electricity market and the incidence of technology sources on its price formation, both on the supply and demand sides. In this market, blind auctions allow hourly adjustment of load profiles one day prior to delivery, with hour one starting at midnight. Firms may simultaneously submit up to 256 price and quantity combinations for each of the 24 hours of the following day. Bids aggregate a portfolio of units with different technologies (multi-unit auction), pooling together combinations of coal, gas, hydro, wind, solar, etc. These bids make up an increasing step-wise function capped between -500 €/MW and 3000 €/MW, allowing minimum price and volume increments up to 0.1€/MWh and 0.1 MW, respectively. Once the gate is closed, bids are ordered in ascending order, from the lowest cost to the highest cost offer, each

block containing a minimum of two hours of the day. Figure 1 shows the matching of aggregated bids resulting in a uniform market-clearing price for the AT-DE-LU bidding zone<sup>2</sup>. A week prior to delivery, ENTSO-e also receives forecasts on the production of electricity from solar, as well as, both wind offshore and wind onshore. If there are any significant changes in weather conditions, the information is updated more frequently. In our data, electricity production comprises on average the following technologies: lignite 22 percent, wind onshore 14 percent, nuclear 12 percent, coal 12 percent, hydro 8 percent, solar 7 percent, biomass 7 percent, oil or similar 6 percent, gas 5 percent, wind offshore 2.6 percent, pumped storage 2.4 percent, and other renewables 0.3 percent. In our period of analysis, the incidence of electricity production from intermittent renewables was 24 percent, compared to 46 percent from fossil fuels, on average. We represent a total of 35 companies in the analysis, with five of the largest being RWE, Vattenfall, EnBW, Uniper, and Engie, together accounting for 44 percent of the shares of electricity demand on average.

Yet, the EU ETS market is another mechanism affecting the formation of the day-ahead electricity prices through CO<sub>2</sub> prices. In this data, the average load factor of electricity production<sup>3</sup> was 78 percent for lignite, 41 percent for coal, 24 percent for gas, and 21 percent for oil. For 2017 and 2018, the Umweltbundesamt (Office for the Environment) registered emission factors of 0.40 *tons/MWh* for lignite, 0.34 *tons/MWh* for coal, 0.27 *tons/MWh* for oil, and 0.20 *tons/MWh* for gas, on average.

## 1.2 Data

*Equilibrium data.*- We gathered hourly data from public and private sources from January 2017 to September 2018. Aggregate demand, electricity production and day-ahead prices are from the SMARD database provided by the German regulator. The electricity production figures from each of our 119 plants are from AURORA and ENTSO-e databases. These plants have installed capacities above 100 MW, and their electricity generation sums to 55 percent of total domestic demand. For the SFE method, we also consider the remaining plants as aggregates, in order to represent the entire system capacity. For the SFE model, we use wind speed and solar radiation data from the Deutscher Wetterdienst as controls. For the Bertrand model, the technologies of plants we model include: pump storage, hydro, nuclear, lignite, coal, gas, oil, solar, wind offshore and onshore. We use commodity prices (coal, gas and oil) as supply instruments. We use the ARA spot price (CIF without transportation fees), the Gaspool price, and the Brent crude oil price for Germany, all of which we convert to euros per MWh thermal. Since commodities register prices only on weekdays, we consider the last weekday available as the value for weekends and holidays. CO<sub>2</sub> spot prices are from the EEX database under EUSP contracts. We shift the day-ahead electricity price one day after, to match it to electricity production in both models. Our demand instrument uses data on temperature, sourced from the Deutscher Wetterdienst database. We collected data on CO<sub>2</sub> emission rates of fossil fuels from the Umweltbundesamt. For both models, we employ heat rates and installed capacities per plant from the Open Power Project database. Finally, meters sometimes do not register hourly measurements of electricity production, temperature, wind speed or solar radiation. When these are point estimates, we take the average of the previous and following hours. But longer periods of time with missing data and the fact that logit models cannot account

---

<sup>2</sup>The AT-DE-LU bidding zone split, leaving Austria to bear the congestion costs since October 1st 2018, which also defines the end of our period of analysis.

<sup>3</sup>Load factor is electricity generation as a percentage of the maximum feasible generation. To determine the latter, we compare the nameplate capacity of the plant to the operational maximum, and use the maximum of the two values.

Table 1: Descriptive statistics

	Mean	Standard deviation	Min.	Max.
Day-ahead price (€/MWh)	37.855	17.368	-81.950	163.520
Coal prices (€/MWh)	11.197	0.900	9.540	12.870
Gas prices (€/MWh)	18.890	3.141	14.760	29.400
Oil prices (€/MWh)	31.646	4.598	23.910	41.930
CO <sub>2</sub> prices (€/MWh)	9.399	5.070	4.350	25.190
Fuel costs (€/MWh)	39.726	17.309	1.000	130.402
CO <sub>2</sub> costs (€/MWh)	6.056	4.051	0.000	24.732
Installed capacity (MW)	906.606	1569.495	0.000	4211.460
Residual demand (GW)	14.119	11.022	-14.824	50.577
Wind speed (m/s)	3.391	2.012	0.000	24.100
Solar radiation (J/cm <sup>2</sup> )	476.488	772.802	0.000	3790.000
Market share	0.008	0.015	0.000	0.348
Load factor	0.532	0.312	0.000	1.000
Temperature (°)	10.667	8.492	-30.000	37.700
Observations	951, 223			

Fuel costs equal fuel price multiplied by the heat-rate factor. CO<sub>2</sub> costs equal CO<sub>2</sub> prices multiplied by the heat-rate factor and corresponding emission factor.

for zero shares, cause a loss of 39 percent of a total of 1,556,877 observations. Table 1 describes the variables we use to construct the supply and demand curves.

Since we do not observe hourly heat production from combined heat power (CHP) plants, we use data from four main sources: hourly heat profiles (for space and water heating) of industrial and residential consumers, monthly data of net heat production from coal and gas, annual data of heat production from coal and gas CHP plants, and actual hourly electricity production from coal and gas. We obtain this data from public sources such as the Open Power Project and the Genesis database from the Statistisches Bundesamt. We also use technical data of generation units to observe the capacity used as heat recovery, extraction-condensing or back pressure.<sup>4</sup> To further understand the trends and their evolution in our dataset, Figure 2 shows day-ahead and input prices during 2017 and 2018. Interestingly, after the federal government reached agreements about the legal framework for the implementation of the fourth phase of the ETS at the end of year 2017, CO<sub>2</sub> prices reveal a nuanced increasing tendency. The variation in day-ahead prices is more volatile than the variation of input prices. To further examine this source of variation, Figure 3 shows the variation in wind and solar electricity production, compared to total demand. To better understand how seasonal daily variations influence electricity demand, we divide the day into three blocks of hours; an off-peak block from 20:00 to 06:00 (night), a peak 1 of block from 6:00 to 13:00 (morning), and a peak 2 of block from 13:00 to 20:00 (afternoon).

*A closer look at input costs.*- For the SFE method, we construct the supply curve of the day-ahead market, using estimates of fuel, CO<sub>2</sub>, and O&M costs. These form the input costs of our thermal plants for coal, gas and oil technologies. For both models, we compute fuel costs by multiplying input prices by the heat rate<sup>5</sup> of each plant. Whenever we do not find data on specific heat rates,

<sup>4</sup>If the technology of a given generation unit is heat recovery or back pressure, it will have to produce heat and electricity in a fixed ratio, and, consequently, treat electricity production as must-run (or one degree of freedom). If it is extraction-condensing, it can variably switch between heat and electricity generation (or two degrees of freedom).

<sup>5</sup>The heat-rate unit is the percentage from a MWh electricity divided by MWh per fuel.

we calculate them as in [Hintermann \[2016\]](#). We estimate CO<sub>2</sub> costs as the product of CO<sub>2</sub> prices, heat rates, and CO<sub>2</sub> emissions factors. In Table 10 of the Appendix<sup>6</sup> we describe in detail, plant capacities as of 2017 and 2018, and average heat rates. Table 2 shows the pool of plants used in both models. Electricity production from our lignite plants account for 25 percent of electricity demand, followed by coal with 13 percent on average. Some plants were decommissioned during the period of analysis. To estimate of the pass-through of input costs, we also need to observe the price-setting plant. Without individual bid data on all plants, we can estimate the equilibrium outcomes for both models as described in the following section.

## 2 An alternative model for measuring pass-through under renewables expansion

We represent the day-ahead electricity market as a set of multi-unit auctions where there are  $i = \{1, \dots, N\}$  bidders (or firms). These firms own  $j = \{1, \dots, J\}$  electricity plants (with  $j \neq k$ ) registering hourly market observations  $t = \{1, \dots, T\}$  per  $k = \{1, \dots, K\}$  technologies. We model a market in which bidders trade electricity as a good differentiated in terms of technological characteristics. In this market, there is a set of hourly supply and demand offers (in MWh) submitted for the following day in which bidder  $i$  maximizes his profits by choosing a bidding strategy that is a best response to the distribution of all other opposing bids he faces [[Guerre, Perrigne, and Vuong, 2000](#)]. We approximate the aggregate demand function as a set of market shares following a random distribution, model the supply side as a linear function of costs, and run 50 Monte Carlo simulations per equilibrium [[Berry, 1994](#)]. The source of heterogeneity is then captured in the load factor parameter. We add to this an additional source of uncertainty: we also test whether the supplier’s bids account for the information of weather forecasts. We solve demand and supply sides jointly as in [Conlon and Gortmaker \[2019\]](#). To assess the performance of our model, we also compare it to the SFE method, where demand is inelastic, as in [Wolfram \[1999\]](#). Like [Borenstein, Bushnell, and Wolak \[2002\]](#), we assume perfect arbitrage; that is, any effect of arbitrage due to the interaction of other electricity markets, such as the futures, intraday, or balancing markets, is symmetrically distributed. In other words, all markets are similarly competitive on average.

### 2.1 Structural framework

We approximate a random demand model at hourly levels, representing 119 plants with capacities higher than 100 MW, shown in our previous Table 2. These plants correspond to a pool of inside goods and account for 55 percent of the electricity market production. The rest of the market is the outside good, which is mainly composed of solar, biomass and wind onshore technologies.

Let the shares  $s_{jt}$  or the probability of a set of operational plants  $j$  for firms  $i$  in an hour  $t$  be

$$P(y_{jt} = 1 | \alpha p_t, \beta X_{jt}; \theta) = s_{jt} = \int d_{ijt}(\alpha p_t + \beta X_{jt} + \mu_{ijt}) d\mu_{ijt} d\epsilon_{ijt}, \quad (1)$$

---

<sup>6</sup>This table presents average heat rates for 74 fossil fuel plants, and the remaining pool of plants lower than 100 MW. However, for the merit-order construction under the SFE method, we consider heat rates for each of the 74 plants and the remaining of the pool as a weighted average per technology.

where  $d_{ijt}$  takes the value 1 if it is an inside good, or 0 if it is an outside good; and  $\epsilon_{ijt}$  is a distributed IID type I error (Gumbel). After we integrate over heterogeneous technologies, we get

$$s_{jt} = \int \frac{\exp(\alpha p_t + \beta X_{jt} + \mu_{jt})}{1 + \sum_{j=1}^J \exp(\alpha p_t + \beta X_{kt} + \mu_{kt})} f(\mu_{jt}; \theta) d\mu_{jt}, \quad (2)$$

where  $p_t$  is the hourly day-ahead electricity price and  $X_{jt}$  is a vector of observable control variables. We include as controls weekly, monthly, and yearly dummies.  $\theta$  is a vector containing the load factors (our random variable) affecting the unobservables contained in the error term  $\mu_{jt}$ . This parameter allows us to calculate demand elasticities driven by technology availability (instead of shares).

We characterize profits of firm  $i$  with  $j$  plants facing  $c_j$  costs in market  $M_t$ <sup>7</sup> as

$$\max_{P_t} \prod_{it} = (p_t - c_j) M_t s_{jt}(p_t, X_{jt}, \epsilon_{jt}; \theta) \quad (3)$$

and, solving the first-order conditions, we obtain

$$M_t s_{jt}(p_t, X_{jt}, \epsilon_{jt}; \theta) + \frac{\partial M_t s_{kt}(p_t, X_{kt}, \epsilon_{kt}; \theta)}{\partial p_t} (p_t - c_k) = 0 \quad (4)$$

since  $s_{jt}/(s'_{jt} p_t) = 1/\eta_{jt}$ , with  $\eta_{jt}$  equal to the markup, we solve for marginal costs

$$c_{jt} = p_t - \eta_{jt} \quad (5)$$

and we approximate the marginal costs of the supply side as

$$c_{jt} = \gamma V_{jt} + \varpi_{jt} \quad (6)$$

where  $V_{jt}$  is a vector that contains the parameters of fuel ( $\gamma_1$ ), CO<sub>2</sub> ( $\gamma_2$ ), and ramping ( $\gamma_3$ ) costs.  $\varpi_{jt}$  is the unobservable (to the econometrician) error term. After inverting the shares, we obtain

$$\begin{aligned} \varpi_{jt} &= p_t - \eta_{jt} - \gamma V_{jt} \\ \xi_{jt} &= \delta_{jt} - \beta X_{jt} + \alpha p_t \end{aligned}$$

and, with  $\xi_{jt}$  equal to the structural error, and  $\delta_{jt}$  equal to the mean utility of  $j$  in market  $t$ , we construct supply and demand-side moments as

$$g(\sigma) = \begin{bmatrix} 1/N \sum_{jt} \xi_{jt} Z_{jt}^D \\ 1/N \sum_{jt} \varpi_{jt} Z_{jt}^S \end{bmatrix} \quad (7)$$

where  $Z_{jt}^D$  is a temperature variable that we use as an instrument on the demand side.  $Z_{jt}^S$  is a vector of instruments that we use to orthogonalize the supply side, such as, coal, gas, and CO<sub>2</sub> prices. Using a weight matrix ( $W$ ), it is solved as follows

---

<sup>7</sup>In this case, the market size variable ( $M_t$ ) is exogenous, due to the intermittency of renewables. Markets represent different hours of the day.



$$\min_{\sigma} q(\sigma) \equiv N^2 g(\sigma)' W g(\sigma)$$

Finally, to assess the incidence on welfare, we compute total producer (PS) and consumer (CS) surpluses as

$$PS = \sum_{j,t} (p_{jt} - c_{jt}) s_{jt} \quad (8)$$

and, with  $w_i$  equal to the integration weights in market  $t$ , we obtain

$$CS = \sum_{t,i} = w_i \frac{\log(1 + \sum_j \exp[-\beta X_{jt} + \alpha p_t + \epsilon_{jti}])}{\alpha_i} \quad (9)$$

## 2.2 Comparing our model to a traditional one

*Constructing the benchmark model.*- In this section, we assess the performance of our model compared to the SFE method. To approximate the availability of a plant's capacities, we use the actual maintenance schedule and outage records per plant from ENTSO-e to obtain the probabilities that a fossil fuel technology is able to operate at a given hour. Using these probabilities, we ran 100 Monte Carlo simulations similar to [Borenstein et al. \[2002\]](#). Once we obtain cost and quantity pairs for each plant, we construct the merit order for each hour by ordering of the cost of each plant in an ascending manner and accumulating their capacities. Next, to estimate the equilibrium point, an inelastic residual demand<sup>8</sup> intersects our merit order. An important additional adjustment to capacities, necessary in the German electricity market, is to identify coal and gas plants that are able to produce heat as a by-process (CHP plants<sup>9</sup>). To reflect conditions in the German electricity system, we construct an artificial must-run CHP plant with a cost of €1/MWh. The actual coal and gas CHP plants reduce their capacities by the remaining proportion of heat production, divided by the actual production of electricity from coal or gas, respectively<sup>10</sup>. The remaining proportions then become probabilities for running a Monte Carlo simulation of 100 trials. To verify this model, we compare actual production to our marginal plant estimations as in [Hintermann \[2016\]](#).

Comparing this benchmark model with our model, we compute an elasticity-adjusted markup  $\psi_t$  as in [Bresnahan \[1989\]](#), [Genesove and Mullin \[1998\]](#), and [Wolfram \[1999\]](#) to normalize our markups as follows

$$\psi_t = \left( \frac{p_t - c'_{jt}}{p_t} \right) \phi_t \quad (10)$$

where  $\phi_t$  is the demand elasticity parameter at a given hour. We also know that

$$\phi_t = D_p \frac{P}{Q} \quad (11)$$

where the parameter  $D_p$  is the slope of the short-run residual demand for the SFE model. As we do not observe this value using this method, we assume a slope of -125 as in [Wolfram \[1999\]](#). In

<sup>8</sup>Similar to other studies, the residual demand is defined by the difference in total demand minus must-run. Total demand is defined by domestic demand plus imports minus exports and pump storage. Must-run is defined by the sum of wind onshore, wind offshore, solar, biomass, hydro, lignite, nuclear and other renewable technologies such as waste [\[Hintermann, 2016\]](#).

<sup>9</sup>We excluded oil plants due to their low incidence in the merit order, as well as in heat production.

<sup>10</sup>We also model this artificial CHP plant in the Bertrand model.

comparison, our model allows us to directly estimate  $\phi_t$  as the aggregated elasticities of demand at each hour, which we use to compute the adjusted-elasticity parameter ( $\psi_t$ ).

We also compare our estimates to an approximation of  $\psi$  points toward a Cournot equilibrium.  $\psi$  is equal to 1 if firms are joint profit maximizers,  $1/N$  if firms play a Cournot strategy, and 0 if it is perfect competition or a Bertrand equilibrium. For example, if the German day-ahead electricity market were a Cournot oligopoly of 20 firms, we compare  $\psi_t$  to 0.05.

## 3 Understanding and discussing results

### 3.1 Pass-through costs

In this section, we compare the traditional SFE model to the described Bertrand model by comparing pass-through results of fuel, CO<sub>2</sub>, and ramping costs in Table 3. First, we discuss base estimations for the SFE and the Bertrand models in columns (1) and (3). We then include dynamic ramping costs in columns (2) and (4) to explore how this additional information might affect our base estimations.

*Base regressions.*- Using the traditional model, the results in column (1) of Table 6 suggest full pass-through of fuel costs to electricity prices at night (off-peak); that is, a €1 increase in fuel costs produces a €1.41 increase in electricity prices. The tendency rises to €1.77 during the morning (peak 1), and to €1.83 in the afternoon (peak 2). In contrast, a €1 increase in CO<sub>2</sub> costs produces a €0.79 increase in electricity prices at night, followed by €0.32 during mornings, and €0.38 in the afternoon. When we use the Bertrand model in column (3) of Table 6, we observe the same daily tendency for fuel costs, though with lower magnitudes between €0.62 and €0.69. However, pass-through of CO<sub>2</sub> costs results in a different daily pattern and higher magnitudes with respect to the traditional model. We observe a pass-through of CO<sub>2</sub> costs of €1.55 at night, a maximum value in the morning €1.91, and a €1.80 increase in electricity prices due to CO<sub>2</sub> costs in the afternoon.

For both models, the daily pattern for pass-through of fuel costs seems to follow the shape of the average residual demand and price curves, although with different magnitudes. More interestingly, estimates of pass-through of CO<sub>2</sub> costs using the SFE method contrast markedly with the differentiated Bertrand method, not only in magnitudes but, also in daily patterns. One possible explanation is that we allow the representation of the load as a random variable in the Bertrand model, which is not possible using the aggregated SFE model. To illustrate this, Figure 5 shows the construction of average demand over the three segments of the day for the Bertrand model, which allows for demand function convexity. With (log) convex demand functions, pass through will c.p. be larger (see [Weyl and Fabinger \[2009\]](#)). In our case, this daily pattern for pass-through of CO<sub>2</sub> costs following demand curvature seems to be reinforced by renewable production from wind and solar. With high renewable production, wind and solar will reduce residual demand served by conventional plants and shift the equilibrium to regions with less elastic demand (and flatter supply-curve segments). In this way, electricity prices would be more sensitive to CO<sub>2</sub> costs under the Bertrand model than under the traditional model, with pass-through exceeding 1.

We could also consider that a different use of fossil fuel technologies during the day and night could have an impact on demand elasticities. But as we show in panel A of Figure 6, during this period of time, we do not observe evidence of average fuel switching over the course of a day. We also see that the most responsive technology with respect to flexibility requirements is coal, followed by gas, lignite, and oil. Lignite costs are exogenous to the electricity market, but their electricity

production is the most intensive during this period. It is important to note that we include lignite as part of the must-run technologies that we exclude from the residual demand in the SFE model. In the Bertrand model, we include lignite plants and their costs as part of the panel dataset, but we apply a cost restriction of €24.99/MWh. This restriction ensures that the computation of marginal costs is bounded to coal, gas, and oil. This has a similar effect as using a CHP dummy in the case of the SFE model. Similar to the observed tendency in average electricity production, panel B of Figure 6 shows that average CO<sub>2</sub> emissions from lignite was the highest, followed by coal, and then by similar magnitudes for gas and oil.

It is important to note that the explanatory variables and instruments we use on the supply and demand side already include seasonal effects in the Bertrand model. We also perform further robustness checks on this model using hour fixed effects and week and month of sample dummies (included in Table 8 of the Appendix), but we clearly see a loss of explanatory power in the coefficients. For the SFE model, we present estimations including time dummies in Table 6, because it is unclear whether seasonality effects are also included in the instruments we use for the supply side. However, for these regressions, we see an increase in the standard deviations of the coefficients, as reported in [Hintermann \[2016\]](#). For this reason, we also include additional estimations without time dummies in Table 7 of the Appendix.

*Dynamic ramping cost regressions.*- Columns (2) and (4) of Table 6 show the results when we include ramping costs in the base regressions. We observe that electricity prices become less sensitive to fuel costs in both models. With respect to CO<sub>2</sub> costs, we observe in both models that electricity prices become more constant throughout the day. In the SFE model, ramping-cost coefficients are negative in the morning and afternoon, implying that these costs tend to reduce electricity prices. Under the Bertrand model, ramping costs are almost insignificant. To gain a better picture of these pass-through results, in Figure 1 we include average electricity prices, demand, and renewable production from wind and solar.

With respect to the treatment of ramping costs over time, we use three inputs: ramp-up limits and heat conditions per generation unit, unit ramping costs per generation unit or technology, and the time a given generation unit requires to effectively reach the required output. First, we obtain the capacity change (MW) relative to the previous hour. Then, we assign ramping costs only to capacity changes that lie within a feasible operational interval. For the upper limit of the interval, we identify the maximum MW increase that each generation unit or plant can achieve in an hour from the data we observe. We compare this maximum to the plant’s nominal capacity, in order to verify that each generation unit is close to the ramp-up percentage that is expected from each technology; see percentage ramp up in Table 4. We do this to ensure that the gradients we obtain in our sample data reflect real operation and not a low-operational bound. Because the ramp-up increase cannot be zero, we also apply a lower limit, which is similar to a minimum operational requirement<sup>11</sup>. In our case, we consider this as 20 percent of the nominal capacity of a unit or plant in our study. For the sake of simplicity, we assume that ramping costs correspond to hot operational conditions, that is, the time gap between the stop and the start is less than 8 hours.<sup>12</sup> Second, we extrapolate estimates of ramping costs corresponding to warm conditions for different technologies

<sup>11</sup>We do not observe minimum ramp-up or ramp-down rates.

<sup>12</sup>As a better approximation, one could also observe the time gap between the stop and start of a given generation unit. This would mean that other operational conditions such as warm (with a time gap between 8 and 50 hours) and cold (with a time gap longer than 50 hours) could also be represented [[Boldt, Hankel, Laurisch, Lutterbeck, Oei, Sander, Schröder, Schweter, Sommer, and Sulerz, 2012](#)]. This has an impact on costs, because colder start-ups are more expensive.

[Lin, Schmid, and Weisbach, 2017] to hot conditions using the start-up times shown in Table 5. We rely on those average estimations, because we do not observe data for start-up fuel requirement, depreciation, and maintenance, due to wear and tear for each generation unit or plant. Third, because start-up operations form a gradual gradient with time rates that differ between technologies, we assign ramping costs along the gradient, using hot start-up times ( $h < 8$ ) as shown in Table 5. Finally, we also assigned ramping costs to stops in a similar manner, considering gradient duration times per technology.

We compare two different situations as a result the two methodologies used. First, using the SFE model, there would be an inflationary effect on electricity prices due to fuel costs. This seems to be consistent with the shape of the residual demand. Electricity prices would seem to be less sensitive with respect to CO<sub>2</sub> costs (results show incomplete pass-through). Moreover, when we compare regression (1) to (3), it is evident that expectations of lower renewable production increase the pass-through of fuel and CO<sub>2</sub> costs, with the exception of CO<sub>2</sub> costs at peak hours. These results differ from similar studies that found almost full pass-through of CO<sub>2</sub> costs at peak hours [Fabra and Reguant, 2014], [Hintermann, 2016]. One explanation is that generators might reduce price bids and, thereby, the measured pass-through of CO<sub>2</sub> costs for competing with renewables at peak hours and avoiding being shut down [Bushnell, Mansur, and Saravia, 2008]. Looking at forecast regressions, expectations of more renewables in the morning (compared to other times of day), further reduces pass-through of CO<sub>2</sub> costs, though at only a 5 percent level of significance. The Bertrand model results tell a different story. Although in this case, the pass-through of fuel costs also follows the daily pattern of the residual demand, this would not cause an inflationary effect on electricity prices. Furthermore, CO<sub>2</sub> costs would cause an even higher inflationary effect, especially in the morning, when the production of electricity from renewables is also the highest. Thus, this would imply that the demand would not be the only factor affecting electricity prices; so would the production of electricity from renewables. This is to be expected, because the renewables' priority feed-in means that renewable production acts like an exogenous negative demand shock.

Both models coincide in terms of result patterns, when including ramping costs, although the pass-through of ramping cost magnitudes differ per se. Considering ramping costs reduces pass-through estimations in all cases except for fuel costs increasing in the afternoon and CO<sub>2</sub> costs increasing in the morning.

Although Weyl and Fabinger [2009] show that considering a functional form for the demand side could lead to bias in pass-through estimations, Genesove and Mullin [1998] estimate cost parameters under different demand-side forms and examine bias in cost coefficients under different elasticity-adjusted markups. In their case study, they find that cost estimates are much less accurate when fitting the model to a monopoly rather than perfect competition. Wolfram [1999] also finds that the SFE method predicts higher prices than direct measures of marginal costs. To explore the performance of both models in more detail, we discuss the implications of both conduct parameters in the following section using the regressions that include ramping costs, as these would be the less biased estimates [Reguant, 2014].

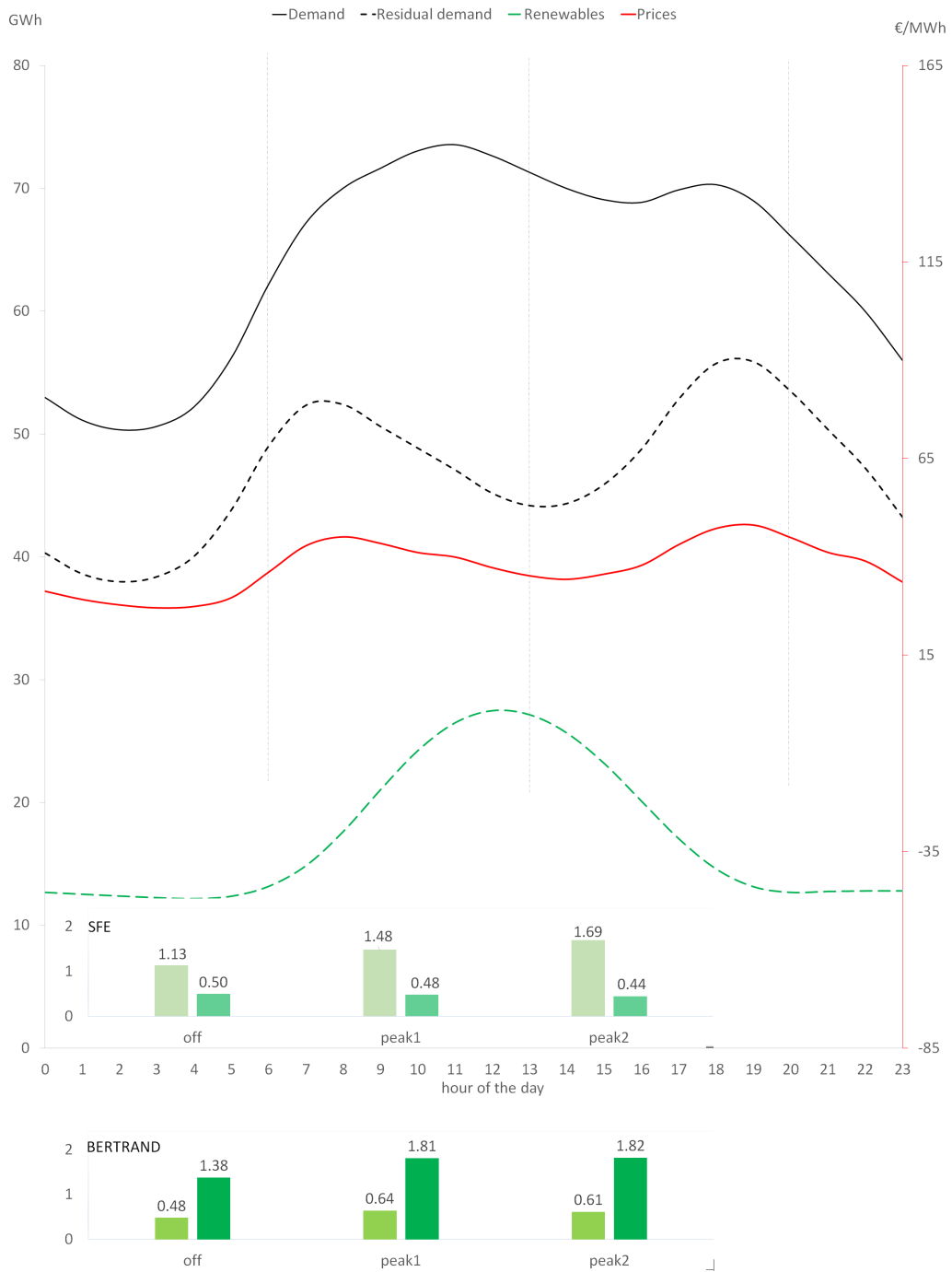


Figure 1: Pass-through of fuel and CO<sub>2</sub> costs with ramping costs. Average price, total demand, residual demand, and renewables from January 2, 2017 to September 30, 2018

### 3.2 Testing the conduct parameter

In this section we compare markups, elasticities, and elasticity-adjusted markups in Table 2, so as to test the performance of the traditional SFE model relative to the Bertrand model. Under the SFE model, we obtain a higher average markup ( $mk_{SFE}$ ) in the morning but lower at night and during the afternoon (negative). When we compare  $mk_{SFE}$  and  $mk_{Bertrand}$  markups, we observe a different pattern, with lower markups under the Bertrand model. Assuming a demand slope equal to -125, we obtain slightly higher elasticity estimates ( $\phi_1$ ) at peak hours compared to off-peak hours. With these inputs we compute elasticity-adjusted markups ( $\psi_1$ ), which reveals on what side of the conjectural variation spectrum (between 0 and 1) we are leaning. In the morning and afternoon, estimations suggest a Cournot competition of 36 and 37 firms respectively. At night we would observe a stronger tendency toward a Bertrand competition (52 firms).

In contrast, using the Bertrand model we observe the highest average markup at night, followed by an equal magnitude the rest of the day. The elasticity results ( $\phi_2$ ) are lower at night and increase in absolute values during the afternoon and morning, with the more elastic value in the morning. Elasticity-adjusted markups follow the same pattern between both models, with the highest value in the morning. Interestingly, with respect to conjectural variations, elasticity-adjusted markups obtained with the Bertrand model suggest fewer firms competing in the morning and afternoon than the traditional model of 14 and 16 firms respectively. At night, our model shows a stronger tendency towards a Bertrand competition (111 firms) than under the SFE model.

Table 2: Comparing elasticity-adjusted markups

	aggregated SFE			Bertrand model		
	$mk_{SFE}$	$\phi_1$	$\psi_1$	$mk_{Bertrand}$	$\phi_2$	$\psi_2$
off-peak	0.284 (26.894)	-0.100 (0.033)	0.019 (0.018)	0.342 (0.169)	-0.009 (0.074)	0.029 (0.020)
peak1	1.451 (67.142)	-0.101 (0.050)	0.033 (0.030)	0.227 (0.134)	-0.530 (0.225)	0.106 (0.016)
peak2	-0.307 (15.339)	-0.101 (0.053)	0.030 (0.030)	0.226 (0.142)	-0.495 (0.214)	0.099 (0.015)

We estimate markups for coal, gas and, oil for both methodologies. For the aggregated SFE, we assume a slope of -125 as in [Wolfram \[1999\]](#). We examine the conduct parameter by focusing only on parameters for technologies that run on fossil fuels.

Overall, the estimations we run in this section are closer at night or off-peak hours for both models. The main differences in estimations occur at peak hours. Moreover, looking at the elasticity-adjusted markups in both models at off-peak hours, suggests that the conduct parameter is closer to a Bertrand or perfect competition game. Markups more intuitively follow the residual demand at the morning peak in the SFE model. However, in addition to the implications of having a different conduct parameter under the Bertrand model, including technology differentiation, which allows for more convex demand curvatures at peak hours, might help explain the difference in markups in the Bertrand model.

### 3.3 Distributive effects on welfare

Since the Bertrand model allows us to compare producer and consumer surpluses against pass-through costs, in this section, we analyze their distribution for the ramping cost regressions. Ordering average Bertrand markups in an increasing manner (off-peak, peak 2, and peak 1), we could reasonably expect this demand-induced effects to carry over to the welfare estimations. We see that the lowest gains for both sides occur in the mornings, followed by the afternoon, and with the highest gains occurring at night, especially for consumers (see Figure 8). It is important to note that average welfare estimations per block of hours are calculated using the entire market of inside goods (recall from Section 2, that this is 55% of the German electricity market), including almost all technologies in the system. One reason for the high value of consumer surplus at night might be that demand is less elastic and less convex during this period, which is closer to the SFE assumptions.

Whether fuel costs or CO<sub>2</sub> costs (or both) are the costs that might result in full pass-through or in an inflationary effect on prices, if we let the Bertrand model results function as a lower bound for welfare estimations (or an average), there could still be latitude to compensate producers. Consumer surpluses appear to be high particularly at off-peak hours, when the highest proportion of renewables are off the grid.

To analyze the empirical consequences of a minimum and maximum carbon price control on welfare, we construct nine synthetic counterfactuals using two methods, and use our simultaneous equilibrium model of Section 2.1. In the first method, we apply constraints to our data to examine how this restriction alter the estimations. To examine the effects of a maximum carbon price, we separate the data into three categories: Hours or markets that registered carbon costs up to €10/tCO<sub>2</sub>, up to €20/tCO<sub>2</sub> and up to €25/tCO<sub>2</sub> (which are also our base and ramping costs regressions). To examine the effects of a minimum carbon price, we separate the data into additional three categories: Hours or markets that registered carbon costs higher than €10/tCO<sub>2</sub>, higher than €20/tCO<sub>2</sub> and higher than €25/tCO<sub>2</sub>. In the second method, we apply a uniform carbon price of €25/tCO<sub>2</sub>, €60/tCO<sub>2</sub> and €100/tCO<sub>2</sub>. Assumptions in the second method include replacing the CO<sub>2</sub> costs that were lower than the caps we apply during our sample period and we calculate prices endogenously.

*First method for counterfactuals with maximum carbon price levels of €10/tCO<sub>2</sub>, €20/tCO<sub>2</sub>, and €25/tCO<sub>2</sub>*

Figure 7 shows an inverse effect between the levels of carbon prices and the pass-through of CO<sub>2</sub> costs, while the pass-through of fuel costs remain almost constant under all counterfactuals. On the contrary, Figure 8 shows a proportional effect between the levels of carbon prices and the welfare of producers and retailers. Consequently, at low carbon prices, fuel and CO<sub>2</sub> costs were passed through to electricity prices with a higher magnitude than at high carbon prices. This resulted in less welfare on both sides at lower carbon prices. This findings under Bertrand competition are consistent with theoretical findings in [Weyl and Fabinger \[2009\]](#) and [Bulow and Klemperer \[2009\]](#), where under perfect competition, consumers would be better off without a price control under high pass-through of CO<sub>2</sub> costs. We see in Figure 9 that marginal costs and electricity prices were proportional to the level of carbon prices. However, we see a change in production levels between 2017 and 2018. In 2017, we observe similar shares of electricity production under all counterfactuals; whereas in 2018, lower carbon prices coincided with higher shares of electricity production, particularly of fossil fuels (see Figure 10). In contrast, higher carbon prices show a more nuanced increase in the shares of electricity production in 2018. We also observe an upward

trend in electricity prices and marginal costs in 2018 compared to 2017. This upward trend in electricity prices and EU ETS prices coincide with the EU ETS reform that reduced the number of free allowances in the system since April 2018 [EP, 2018]. Consumers are slightly better off than producers under these counterfactuals. Although both actors are worst off during peak hours, the higher incidence would still fall to producers, particularly when there are more renewables in the system. A step before the implementation of mechanisms such as subsidies for renewables and the EEG surcharge, the welfare of retailers is higher when there are more renewables in the system and is lower when there is a higher share of fossil fuels.

*Second method for counterfactuals with carbon price levels of €25/tCO<sub>2</sub>, €60/tCO<sub>2</sub>, and €100/tCO<sub>2</sub>*

In this section we investigate the incidence of uniform and higher carbon prices considering that the production of electricity from must-run and renewable sources is able to substitute fossil fuel production without operational restrictions under the same level of demand and fuel prices. Recall that we apply a marginal cost restriction of €24.99/tCO<sub>2</sub> in our regressions<sup>13</sup>. We calculate electricity prices and shares endogenously. A fixed carbon price of €25/tCO<sub>2</sub> reduces the pass-through of input costs at off peak hours and affects differently fuel (increases) and CO<sub>2</sub> costs (reduces) at peak hours, compared to the first counterfactual of €25/tCO<sub>2</sub> where we have carbon prices up to €25/tCO<sub>2</sub>. Figure 12 shows that higher carbon prices reduce the pass-through of fuel costs and increase the pass-through of CO<sub>2</sub>. The welfare of producers remain almost constant under all counterfactuals and is almost similar to retailers at peak hours. Higher carbon prices reduce producer’s surplus mainly at off-peak hours. Under these scenarios, the higher incidence still falls on producers, reducing their gains mainly at off-peak hours. For retailers, higher carbon prices reduce welfare mainly in the afternoon and off-peak hours with the exception of the counterfactual where carbon prices reach €100/tCO<sub>2</sub> where we observe a higher level of welfare. One reason for this is that at uniform carbon prices of €100/tCO<sub>2</sub> the counterfactual produces electricity mainly on must-run sources, with lower levels of renewables compared to the counterfactual of €60/tCO<sub>2</sub>, and no production from fossil fuels (see Figure 15). This is the main cause of the retailer gains under €100/tCO<sub>2</sub> at peak hours (see Figure 16). Another reason is that the pass-through of fuel costs under this level of carbon prices is also lower compared to the other scenarios.

## 4 Conclusions

In this article we explore the use of a random demand specification with technology as a source of product differentiation, in order to investigate the impact of input costs on electricity prices. We test our model using data from the German day-ahead electricity market. Future flexible demand assumptions in our model are partly supported by the existence of virtual power plants and decentralized electricity generation pilots promoted by the German government as part of the transition to a low-carbon system. Moreover, similar to Nelson, McCracken-Hewson, Whish-Wilson, and Bashir [2018], we assumed that under the transition to a low-carbon economy and beyond, electricity is better represented as a heterogeneous good.

Since we do not observe bid data, we compare our methodology to the traditional SFE method, which serves as a benchmark. Our methodology also allows for the direct estimation of elasticities, which are implicitly assumed under the SFE methodology, as well as the analysis of distributive

---

<sup>13</sup>To reduce computation time from 10 days to a day, we present the regressions of these counterfactuals for off-peak hours applying a marginal cost restriction of €9.99/tCO<sub>2</sub>, which does not alter our results significantly



effects, using reduced form regression analysis. In this sense, we contribute to the literature with three findings. First, we cannot reject the hypothesis that renewable technology affects the curvature of the demand side. This is evident in Figure 1, where we show different pass-through estimates of fuel and CO<sub>2</sub> costs under both methodologies, and Figure 6 where we see a representation of curvatures at off-peak, peak 1, and peak 2 hours. In a future where renewables dominate the production of electricity, and more flexibility options also enable a more elastic demand, it would be more relevant to improve the representation of the demand side. Moreover, this carries implications for revising utilities’ regulations and operations. Although we find two different explanations for the inflationary effect of fuel and CO<sub>2</sub> costs in electricity prices in Section III, under both methodologies, it seems relevant to keep track of the residual demand and renewable production curves in order to approximate pass-through of input-cost estimates.

We also investigate the incidence of ramping costs and renewable shares on our base regressions. For both models, we find that including ramping costs reduces estimates of pass-through of fuel and CO<sub>2</sub> costs at night. This suggests that firms would be able to differentiate costs, and that plant flexibility might exacerbate the difference.

Second, we reject Bertrand competition at peak hours more strongly than at off-peak hours. If we allow these estimations to function as a lower bound, despite the difference in magnitudes, we see that average daily patterns in both models are rather similar. Higher renewable levels in the morning peak seem to be consistent with the ability to exercise market power profitably under the SFE method. However, we also observe losses in the afternoon, when renewable levels are slightly less than in the morning. Whether higher renewable expansion causes higher market power is beyond the scope of our analysis. Under the Bertrand method, higher profits are obtained at off-peak hours rather than peak hours, even though fewer firms compete at peak hours. This also supports the rejection of this model at peak hours.

It is important to note that at peak hours, as renewables expand, in addition to fewer firms competing, it is also more likely that we find fewer quantities of residual demand to capture.

Third, we find that consumers are better off with a carbon price ceiling up to euro25/tCO<sub>2</sub>. Higher carbon price levels coincided with higher electricity prices and lower pass-through estimates and a small increase in welfare for consumers and producers at peak hours in all counterfactuals. However, overall, the higher burden of the incidence still falls on the producer side, particularly at the morning peak. This suggests that the merit-order effect is still more predominant in the electricity market rather than the ETS scheme, at these carbon and electricity price levels. Moreover, at these fuel price levels we didn’t observe interfuel substitution between carbon and gas. Interestingly, compared to 2017, we observe a pronounced spike in electricity production at carbon price levels of euro10/tCO<sub>2</sub> in 2018, which also coincided with an more nuanced upward trend in electricity prices. Thus, carbon price levels impacted electricity production more strongly than electricity prices. Under the uniform price of carbon counterfactuals up to euro100/tCO<sub>2</sub> we see that the system relays highly on must-run sources which translates also in gains for retailers. This confirms the importance of increasing the levels of flexibility in a low-carbon electricity system.

One form of compensation could be to transfer some of the CO<sub>2</sub> revenue to promote upgrading or replacing less flexible technologies, with more flexible and cleaner ones. Another option could be to allow multi-part bid auctions that include ramping costs, as proposed in [Jha and Leslie \[2020\]](#). However, for uniform price electricity systems such as in Germany, this could lead to higher system costs and market power exercise, due to the existence of inefficient signals of network congestion, which is likely to interfere with efficient outcomes. Another option from the consumer side would be that regulations for utilities allow more flexible demand responses and pricing schemes.

Considering the co-benefits from carbon policies in addition to welfare considerations could provide a more comprehensive benefit-cost analysis. This may include discounted social carbon costs and co-benefits such as health benefits and other spillovers derived from a reduction of greenhouse gases in the electricity sector. Yet, this analysis is outside the scope of this study.

Some limitations of the alternative methodology could be improved by exploring a Cournot model with technology as a source of product differentiation. The conduct parameter could be tested more precisely using actual bid data.

## References

- Daron Acemoglu, Ali Kakhbod, and Asuman Ozdaglar. Competition in electricity markets with renewable energy sources. *The Energy Journal*, 38(KAPSARC Special Issue), 2017.
- Steven Berry, James Levinsohn, and Ariel Pakes. Automobile prices in market equilibrium. *Econometrica: Journal of the Econometric Society*, pages 841–890, 1995.
- Steven T Berry. Estimating discrete-choice models of product differentiation. *The RAND Journal of Economics*, pages 242–262, 1994.
- Jenny Boldt, Lisa Hankel, Lilian Laurisch, Felix Lutterbeck, Pao-Yu Oei, Aram Sander, Andreas Schröder, Helena Schweter, Philipp Sommer, and Jasmin Sulerz. Renewables in the grid modeling the german power market of the year 2030. *Electricity Markets Working Papers*, 48:1–91, 02 2012.
- Severin Borenstein, James B Bushnell, and Frank A Wolak. Measuring market inefficiencies in california’s restructured wholesale electricity market. *American Economic Review*, 92(5):1376–1405, 2002.
- Timothy F Bresnahan. Empirical studies of industries with market power. *Handbook of industrial organization*, 2:1011–1057, 1989.
- Jeremy Bulow and Paul Klemperer. Why do sellers (usually) prefer auctions? *American Economic Review*, 99(4):1544–75, 2009.
- Bundesregierung. Eckpunkte für das klimaschutzprogramm 2030, 2020. URL <https://www.bundesregierung.de/resource/blob/997532/1673502/768b67ba939c098c994b71c0b7d6e636/2019-09-20-klimaschutzprogramm-data.pdf?download=1>.
- James B Bushnell, Erin T Mansur, and Celeste Saravia. Vertical arrangements, market structure, and competition: An analysis of restructured us electricity markets. *American Economic Review*, 98(1):237–66, 2008.
- Christopher Conlon and Jeff Gortmaker. Best practices for differentiated products demand estimation with pyblp. Technical report, Working paper. url: <https://chrisconlon.github.io/site/pyblp.pdf>, 2019.
- Ulrich Doraszelski, Gregory Lewis, and Ariel Pakes. Just starting out: Learning and equilibrium in a new market. *American Economic Review*, 108(3):565–615, 2018.

- EP. Directive (eu) 2018/410 of the european parliament and of the council, 2018. URL <https://eur-lex.europa.eu/legal-content/EN/TXT/PDF/?uri=CELEX:32018L0410&from=EN>.
- Natalia Fabra and Mar Reguant. Pass-through of emissions costs in electricity markets. *American Economic Review*, 104(9):2872–99, 2014.
- David Genesove and Wallace P Mullin. Testing static oligopoly models: conduct and cost in the sugar industry, 1890-1914. *The RAND Journal of Economics*, pages 355–377, 1998.
- Emmanuel Guerre, Isabelle Perrigne, and Quang Vuong. Optimal nonparametric estimation of first-price auctions. *Econometrica*, 68(3):525–574, 2000.
- Johannes Gütschow, Louise Jeffery, and Robert Gieseke. The primap-hist national historical emissions time series (1850-2016). V. 2.0. gfs data services., Potsdam Institute for Climate Impact Research, 2019. URL <http://doi.org/10.5880/PIK.2019.001>.
- Beat Hintermann. Pass-through of co2 emission costs to hourly electricity prices in germany. *Journal of the Association of Environmental and Resource Economists*, 3(4):857–891, 2016.
- Akshaya Jha and Gordon Leslie. Dynamic costs and market power: Rooftop solar penetration in western australia. *Available at SSRN*, 2020.
- Paul L Joskow and Richard Schmalensee. The performance of coal-burning electric generating units in the united states: 1960–1980. *Journal of Applied Econometrics*, 2(2):85–109, 1987.
- Tjalling Koopmans. Statistical estimation of simultaneous economic relations. *Journal of the American Statistical Association*, 40(232):448–466, 1945. ISSN 01621459. URL <http://www.jstor.org/stable/2280215>.
- Chen Lin, Thomas Schmid, and Michael S Weisbach. Price risk, production flexibility, and liquidity management: Evidence from electricity generating firms. Technical report, National Bureau of Economic Research, 2017.
- Tim Nelson, Eleanor McCracken-Hewson, Patrick Whish-Wilson, and Stephanie Bashir. Price dispersion in australian retail electricity markets. *Energy Economics*, 70:158–169, 2018.
- Mar Reguant. Complementary bidding mechanisms and startup costs in electricity markets. *The Review of Economic Studies*, 81(4):1708–1742, 2014.
- James N Rosse. Estimating cost function parameters without using cost data: Illustrated methodology. *Econometrica: Journal of the Econometric Society*, pages 256–275, 1970.
- Umweltbundesamt. Braunkohlenkraftwerke in deutschland gemäß kohleausstiegsgesetz, 2020. URL <https://www.umweltbundesamt.de/bild/tab-braunkohlenkraftwerke-in-deutschland-gemaess>.
- Gregory J Werden. The economists view: Identifying market power in electric generation. *Fortnightly*, 134(4), 1996.
- E Glen Weyl and Michal Fabinger. Pass-through as an economic tool. *SSRN eLibrary*, 2009.
- Catherine D Wolfram. Measuring duopoly power in the british electricity spot market. *American Economic Review*, 89(4):805–826, 1999.

# A Appendix

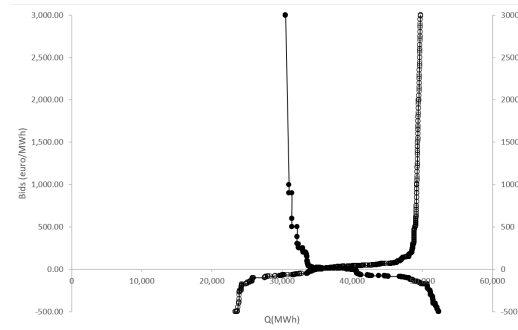


Figure 2: Formation of market-clearing price, January 3rd 2018, hour 12

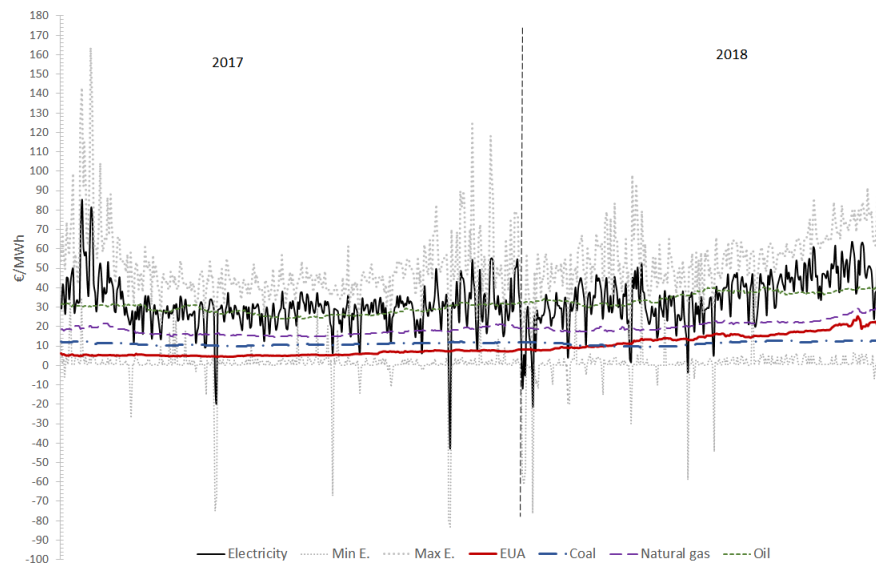


Figure 3: Daily prices

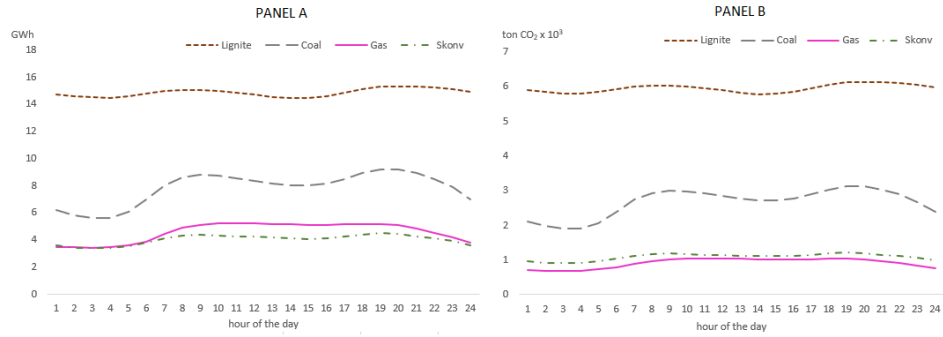


Figure 4: Average electricity production and CO<sub>2</sub> emissions per energy source from January 2, 2017 to September 30, 2018

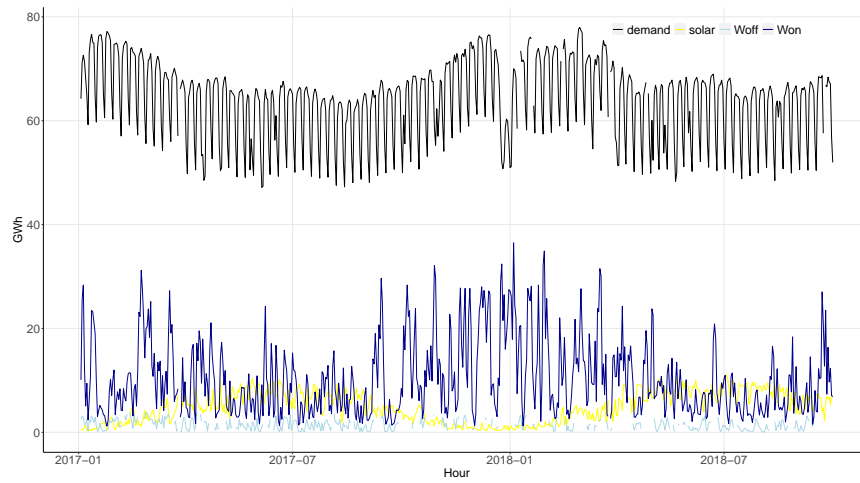


Figure 5: Daily consumption of electricity generated from renewables and total demand from January 2, 2017 to September 30, 2018

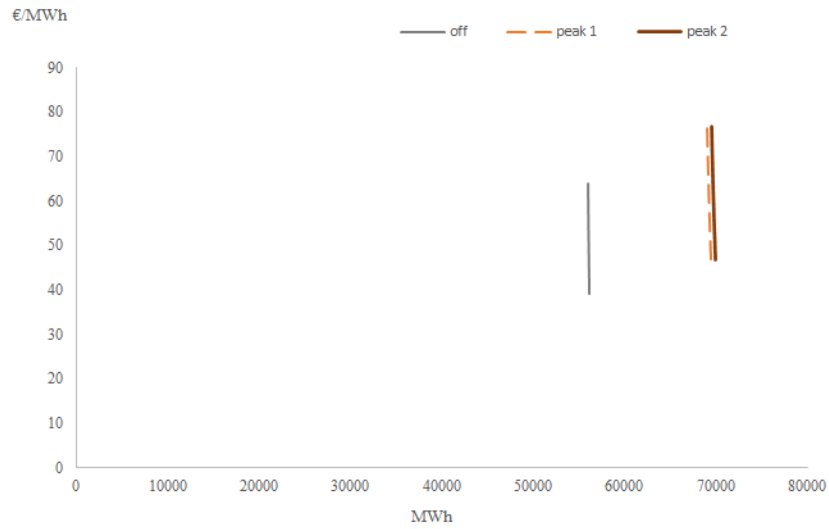


Figure 6: Average demand curves at off-peak, peak 1, and peak 2 under the Bertrand model, regression with ramping costs

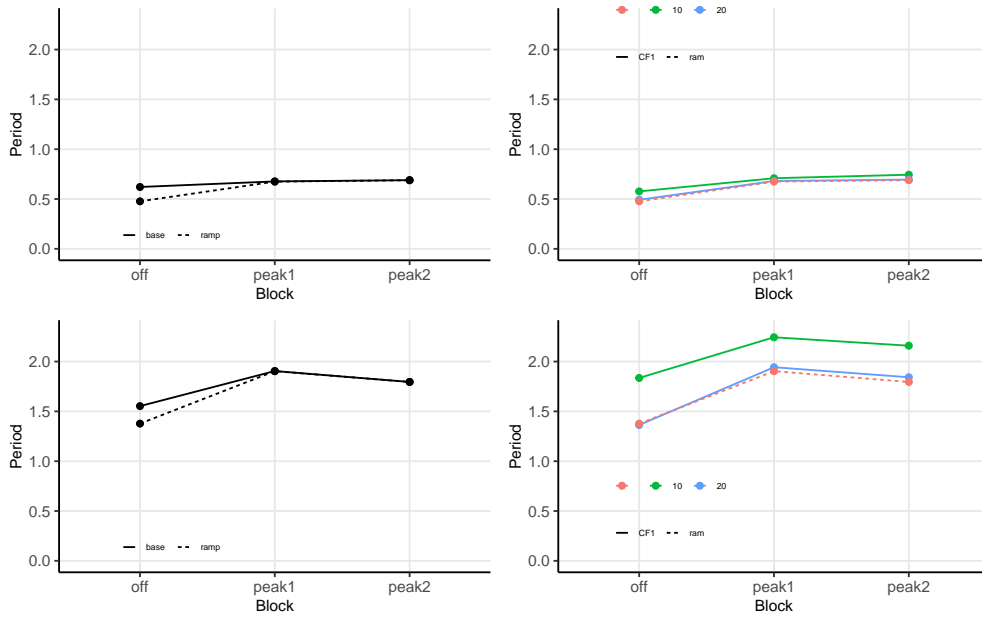


Figure 7: Pass-through of fuel and CO<sub>2</sub> costs for counterfactuals with carbon prices up to €10/tCO<sub>2</sub>, €20/tCO<sub>2</sub> and €25/tCO<sub>2</sub>

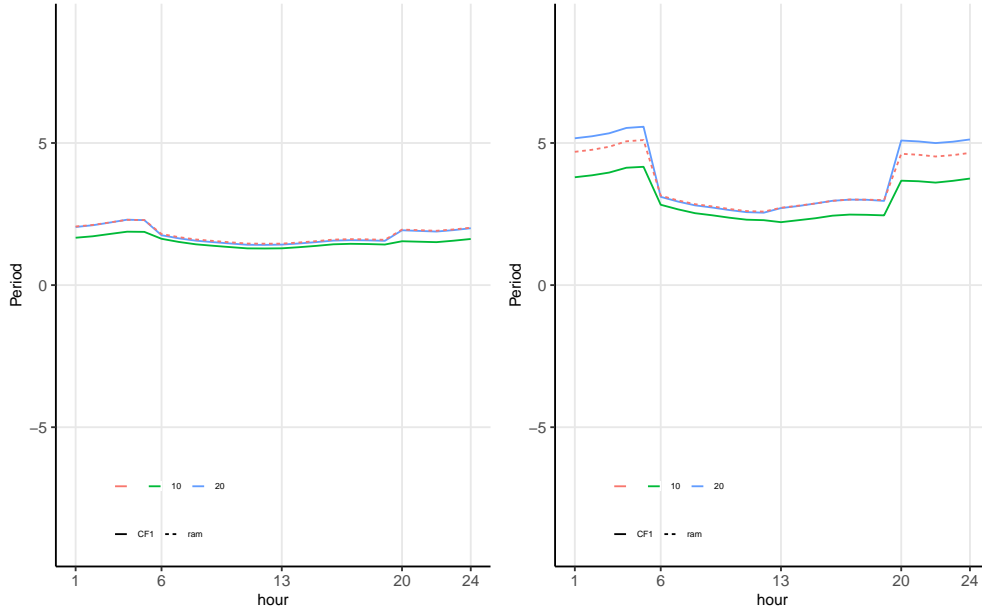


Figure 8: Producer and consumer surplus for for counterfactuals with carbon prices up to €10/tCO<sub>2</sub>, €20/tCO<sub>2</sub> and €25/tCO<sub>2</sub>

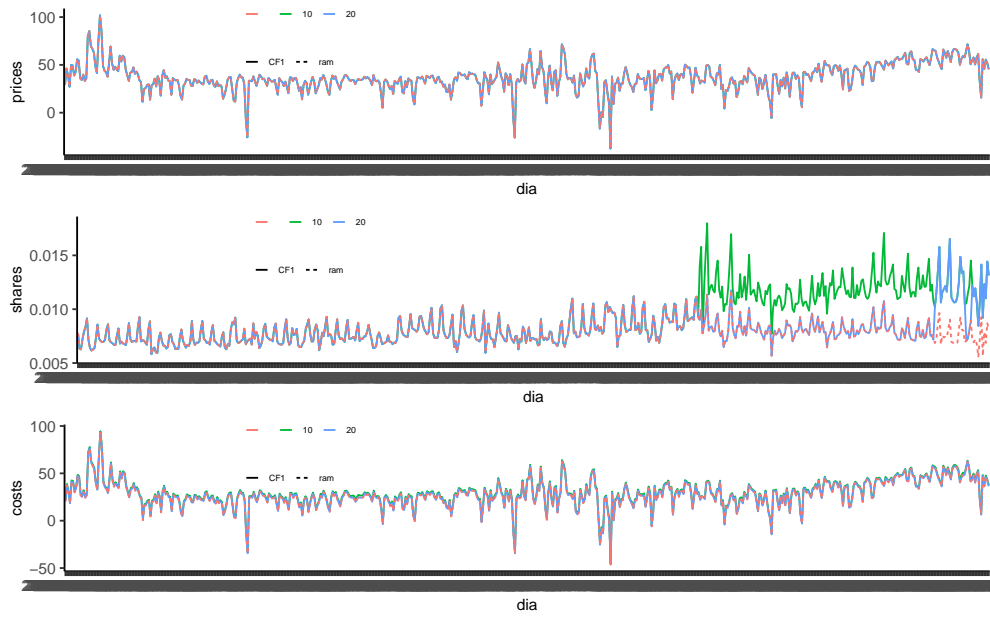


Figure 9: Electricity prices, shares and marginal costs daily averages up to €10/tCO<sub>2</sub>, €20/tCO<sub>2</sub> and €25/tCO<sub>2</sub>

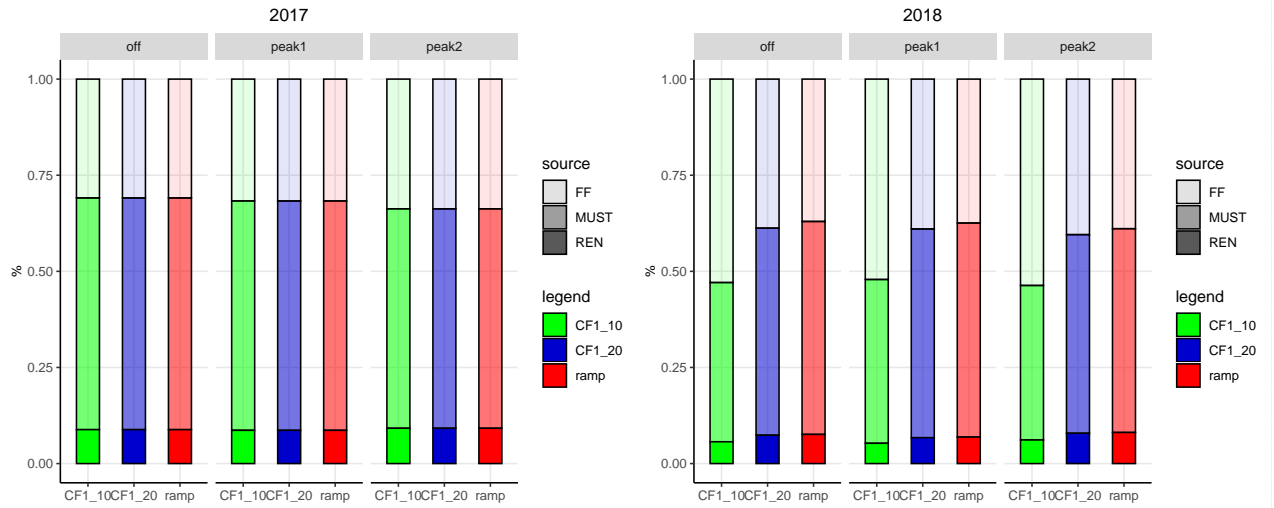


Figure 10: Shares of renewables, must-run and fossil fuels up to €10/tCO<sub>2</sub>, €20/tCO<sub>2</sub> and €25/tCO<sub>2</sub>

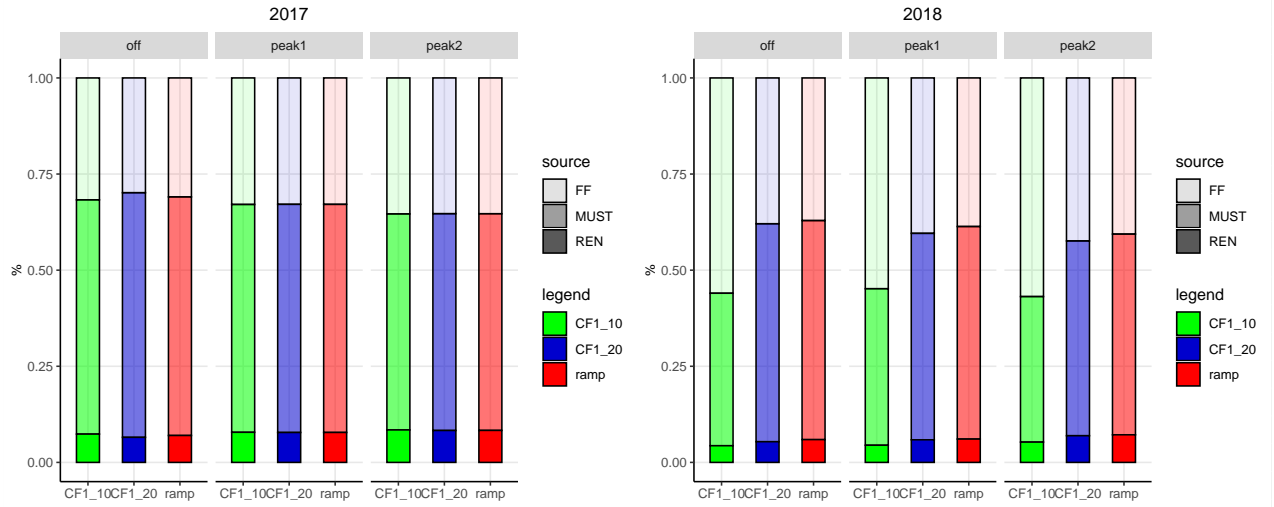


Figure 11: Producer surpluses of renewables, must-run and fossil fuels up to €10/tCO<sub>2</sub>, €20/tCO<sub>2</sub> and €25/tCO<sub>2</sub>



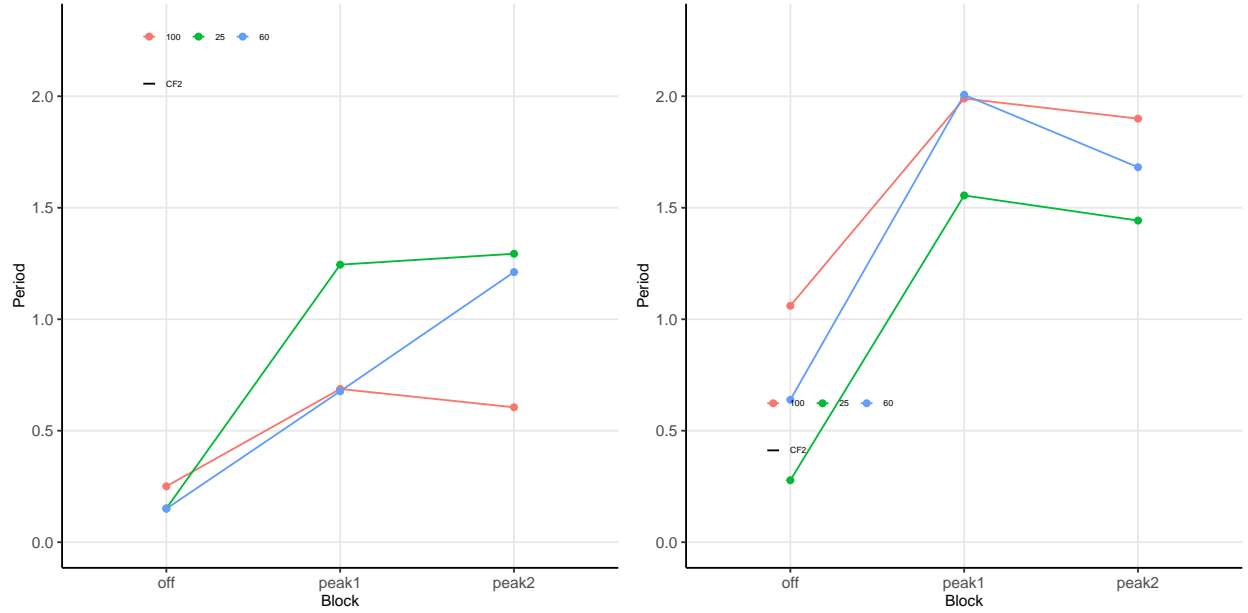


Figure 12: Pass-through of fuel and CO<sub>2</sub> costs for counterfactuals with fixed carbon prices of €25/tCO<sub>2</sub>, €60/tCO<sub>2</sub> and €100/tCO<sub>2</sub>

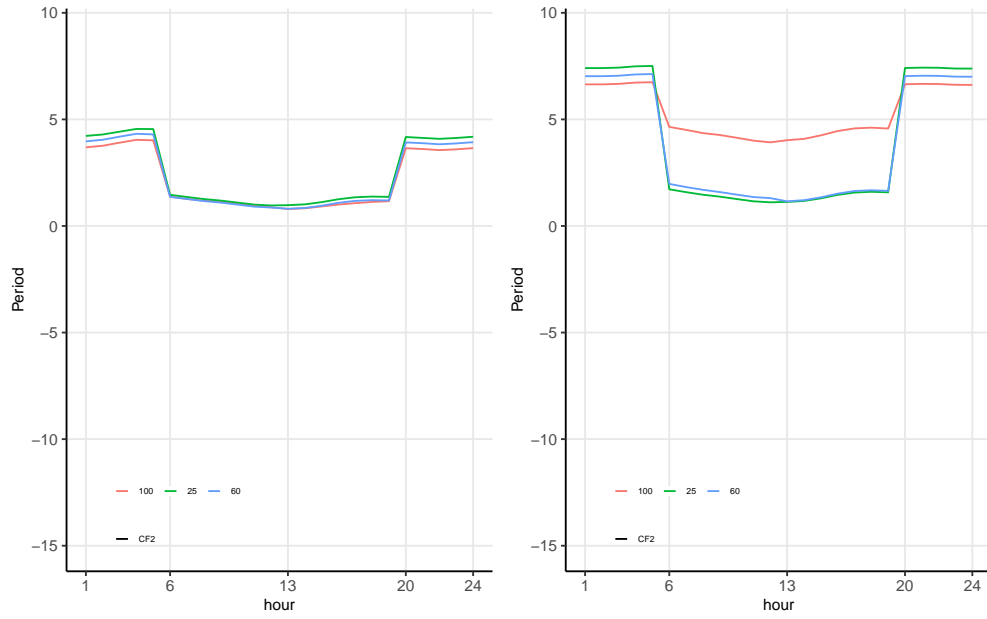


Figure 13: Producer and consumer surplus for counterfactuals with fixed carbon prices of €25/tCO<sub>2</sub>, €60/tCO<sub>2</sub> and €100/tCO<sub>2</sub>

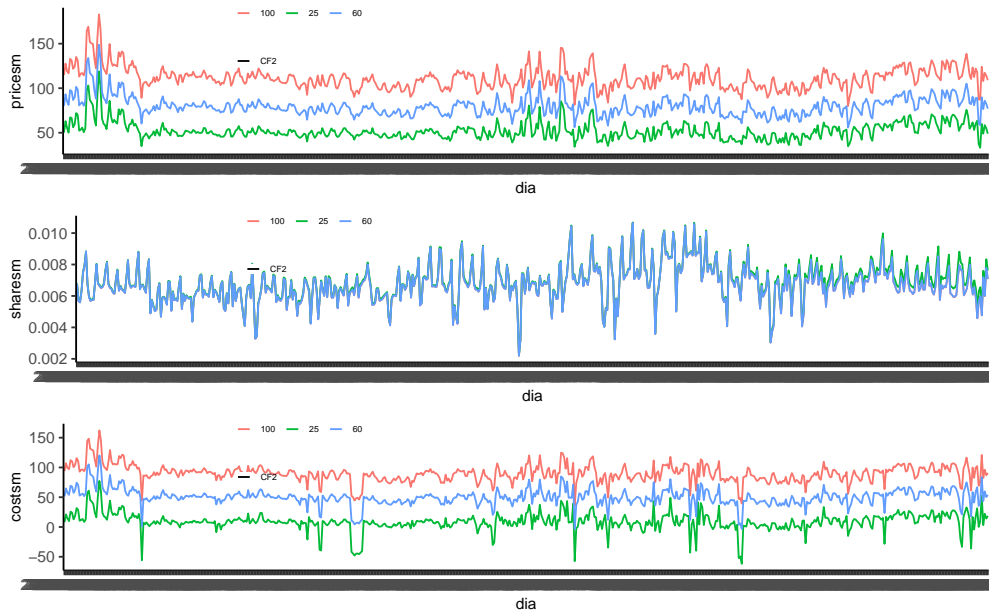


Figure 14: Electricity prices, shares and marginal costs daily averages with fixed carbon prices of €25/tCO<sub>2</sub>, €60/tCO<sub>2</sub> and €100/tCO<sub>2</sub>

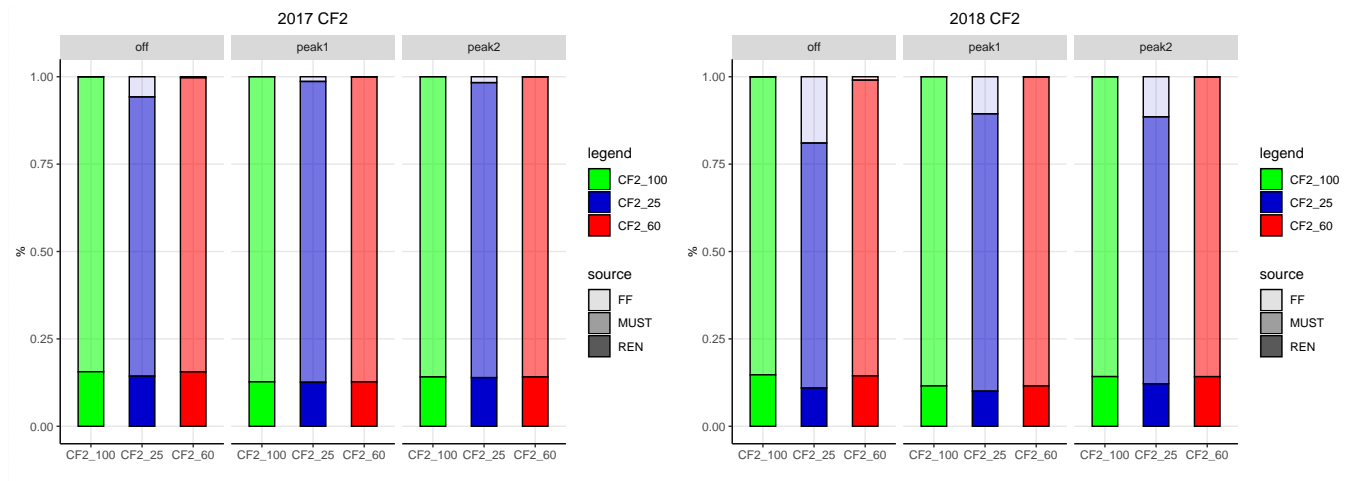


Figure 15: Shares of renewables, must-run and fossil fuels with fixed carbon prices of €25/tCO<sub>2</sub>, €60/tCO<sub>2</sub> and €100/tCO<sub>2</sub>

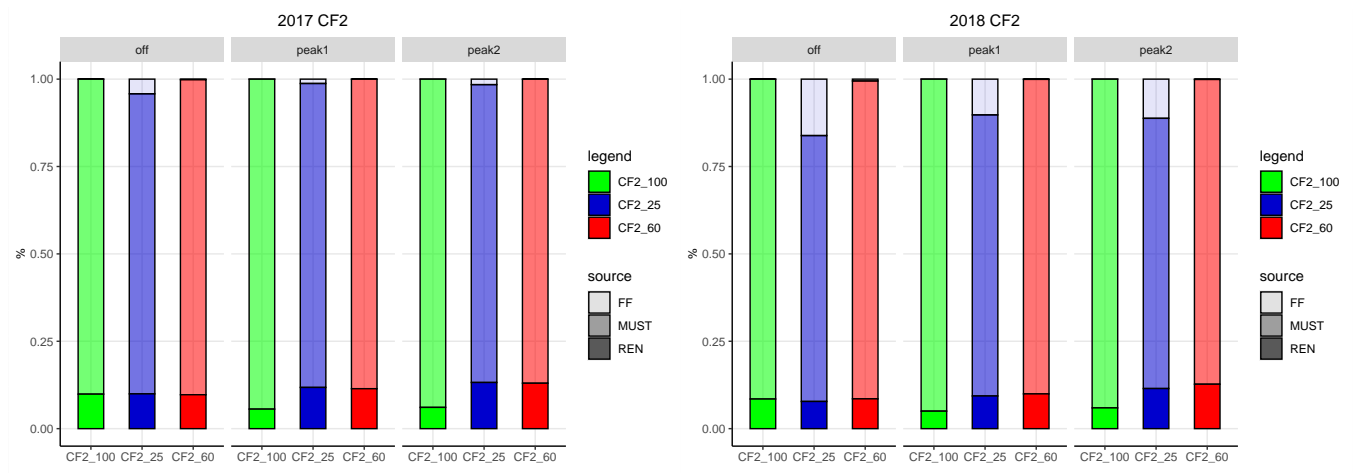


Figure 16: Producer surpluses of renewables, must-run and fossil fuels with fixed carbon prices of €25/tCO<sub>2</sub>, €60/tCO<sub>2</sub> and €100/tCO<sub>2</sub>

## B Appendix

Table 3: Fossil fuel generation data used to construct the merit order

Technology	Net capacity (MW)		Heat rate (1/efficiency)
	2017	2018	
Coal	25,274	24,695	2.47
Steam turbine	25,274	24,695	2.47
CCGT	—	—	—
Natural Gas	15,571	15,578	2.02
Combustion engine	—	—	—
Steam turbine	1,812	1,812	2.67
OCGT	637	637	2.41
CCGT	13,122	13,129	1.87
Oil	1,246	1,246	2.82
Steam turbine	1,106	1,106	2.73
OCGT	140	140	3.02
CCGT	—	—	—
Other fuels	600	600	2.45
rest Coal	2,761	938	2.53
Steam turbine	2,261	438	2.59
CCGT	500	500	2.24
rest Natural Gas	20,705	19,436	2.44
Combustion engine	58	56	2.17
Steam turbine	7,395	7,082	2.65
OCGT	1,767	1,656	2.40
CCGT	11,485	10,642	1.88
rest Oil	2,919	2,919	2.84
Steam turbine	1,236	1,236	2.71
OCGT	1,001	1,001	3.11
CCGT	682	682	2.63
rest Other fuels	3,299	3,217	2.82

We adjust capacities given by Bnetza(SMARD) by -142MW from year 2017 and 2018 to match the data, assuming that the changes in capacity between these years were due only to the retirement of plants >100 MW.

Table 4: Plants analyzed in this study with capacities higher than 100 MW

Technology	Plant
CHP must-run	1
Coal	40
Gas steam turbine	4
Gas OCGT	2
Gas CCGT	25
Hydro	4
Nuclear	6
Lignite	10
Oil steam turbine	2
Oil OCGT	1
Other fossil fuel	1
Other renewables	2
Pump storage	13
Wind offshore	8
Wind onshore	1
Total plants	119

We model an artificial must-run combined heat power plant (CHP plant), see Section II.B. OCGT refers to open cycle gas turbine and CCGT refers to combined cycle gas turbine. The category “other fossil fuel” corresponds to a gas-fired plant using as fuels blast furnace gas, coke oven gas, or natural gas. The category “other renewables” corresponds to waste.

Table 5: Assumptions for ramping-costs regressions

Technology	Start-up condition		% ramp-up	hot ramping costs €/MWh
	$8 < h < 50$	$h < 8$		
Coal	4.0	1.5	66.67	19.60
Gas	1.5	0.5	100.00	9.44
Gas CCGT	3.0	1.0	100.00	11.96
Lignite	5.0	2.0	50.00	15.92
Oil	3.0	1.0	100.00	9.44

Gas and oil values apply to steam turbines and OCGT technologies. Values adapted from [Boldt et al. \[2012\]](#) and [Lin et al. \[2017\]](#). CHP is excluded from ramping costs, because their contribution to flexibility has so far been insignificant. Biomass, pump and hydro are also excluded from ramping assumptions, because we do not observe their opportunity costs, and together, and they sum on average 18 percent of total production. Nuclear technology registered only small variations in production during this period of analysis.

Table 6: Pass-through results

	aggregated SFE			Bertrand model	
	(1)	(2)	<i>Obs</i>	(3)	(4) <i>Markets</i>
<i>Fuel costs (<math>\gamma_1</math>)</i>					
off-peak	1.406*** (0.110)	1.131*** (0.130)	5,693	0.62*** (0.005)	0.577*** (0.003)
peak1	1.771*** (0.120)	1.480*** (0.160)	4,099	0.677*** (0.009)	0.675*** (0.009)
peak2	1.832*** (0.090)	1.694*** (0.160)	4,099	0.689*** (0.009)	0.689*** (0.009)
<i>CO<sub>2</sub> costs (<math>\gamma_2</math>)</i>					
off-peak	0.789*** (0.110)	0.497* (0.200)	5,693	1.553*** (0.021)	1.630*** (0.010)
peak1	0.317* (0.140)	0.483** (0.160)	4,099	1.905*** (0.006)	1.903*** (0.006)
peak2	0.378** (0.120)	0.437* (0.200)	4,099	1.795*** (0.006)	1.795*** (0.006)
<i>Ramping costs (<math>\gamma_3</math>)</i>					
off-peak		1.711* (1.630)	5,693		0.034*** (0.003)
peak1		-3.061*** (3.180)	4,099		0.041*** (0.006)
peak2		-18.979* (7.940)	4,099		0.009 (0.007)
F-test	192.9	129.6			
J-test	25.871	-			
R <sup>2</sup> / GMM Obj.	0.365	-		1.96E+04	1.97E+05
Ramping costs	<i>No</i>	<i>Yes</i>		<i>No</i>	<i>Yes</i>

We report the lowest F-tests, and highest J-tests for off-peak, peak1, and peak2 subsamples. All regressions for the SFE methodology include hour FE, day of the week dummies, and month sample. In addition, we control for CHP units being marginal and hourly negative residual demands. For both cases, we apply a low-cost bound of €24.99/MWh. For the SFE model we also control for wind speed and solar radiation, but coefficients do not differ significantly.

Table 7: Pass-through additional interactions, SFE model

	(1)	(2)	(3)	(4)	(5)	(6)	Obs
<i>Fuel costs</i> ( $\gamma_1$ )							
off	1.378 (0.110)	1.386 (0.110)	0.788 (0.070)	1.135 (0.130)	1.171 (0.160)	1.152 (0.150)	5,693
peak1	1.797 (0.130)	1.800 (0.130)	1.319 (0.090)	1.507 (0.130)	1.333 (0.150)	1.333 (0.150)	4,099
peak2	1.853 (0.100)	1.871 (0.100)	1.376 (0.070)	1.493 (0.090)	1.584 (0.210)	1.587 (0.160)	4,099
<i>CO<sub>2</sub> costs</i> ( $\gamma_2$ )							
off	0.820 (0.110)	0.842 (0.110)	1.166 (0.080)	0.582 (0.170)	0.520* (0.220)	0.543** (0.200)	5,693
peak1	0.353* (0.150)	0.350* (0.150)	0.785 (0.130)	0.304(*) (0.200)	0.597 (0.170)	0.597 (0.170)	4,099
peak2	0.422 (0.120)	0.410 (0.120)	0.839 (0.110)	0.538 (0.140)	0.586** (0.210)	0.579** (0.210)	4,099
<i>Ramping costs</i> ( $\gamma_3$ )							
off					0.629(*) (1.420)	0.581(*) (1.380)	5,693
peak1					-0.665(*) (3.090)	-0.676(*) (3.070)	4,099
peak2					-16.207* (7.730)	-16.418* (7.710)	4,099
F-test	286.2	257.1	199.6	142.5	158.9		
J-test	32.2	31.9	17.9	4.757	-		
R <sup>2</sup>	0.452	0.344	0.127	-	-		
Hour FE	No	Yes	Yes	Yes	No	Yes	
Wind	No	No	Yes	No	No	No	
Solar	No	No	No	Yes	No	No	
Ramping costs	No	No	No	No	Yes	Yes	

Table 8: Pass-through additional interactions, Bertrand model

	(1)	(2)	(3)	Obs
<i>Fuel costs (<math>\gamma_1</math>)</i>				
off	0.590 (0.003)	0.575 (0.030)	0.754 (0.006)	6,053
peak1	0.655 (0.006)	0.777 (0.002)	0.777 (0.002)	4,162
peak2	0.659 (0.006)	0.781 (0.003)	0.781 (0.003)	4,163
<i>CO<sub>2</sub> costs (<math>\gamma_2</math>)</i>				
off	1.630 (0.011)	1.652 (0.018)	2.282 (0.007)	6,053
peak1	2.055 (0.008)	2.423 (0.007)	2.423 (0.007)	4,162
peak2	1.955 (0.008)	2.308 (0.008)	2.308 (0.011)	4,163
<i>price (<math>\beta</math>)</i>				
off	-0.141 (0.006)	-0.121 (0.006)	2.277 (0.011)	6,053
peak1	-0.136 (0.005)	171.864 (5.918)	187.300 (6.208)	4,162
peak2	-0.138 (0.006)	39.690 (152.6)	32.890 (162.000)	4,163
<i>load factor (<math>\theta</math>)</i>				
off	228.50 (32.09)	20.46 (0.744)	-0.052 (24.44)	6,053
peak1	5.691 (4.372)	1079.610 (171.864)	1752.000 (3.311)	4,162
peak2	7.896 (7.332)	1299.00 (8145.00)	1337.000 (9699.000)	4,163
GMM Objective	2.32E+04	2.31E+04	3.13E+04	
Hour FE	No	Yes	Yes	
Weekday	No	No	Yes	
Month	No	No	Yes	

Regression (1) showing additional parameter results for base regression (4) in Table 3.



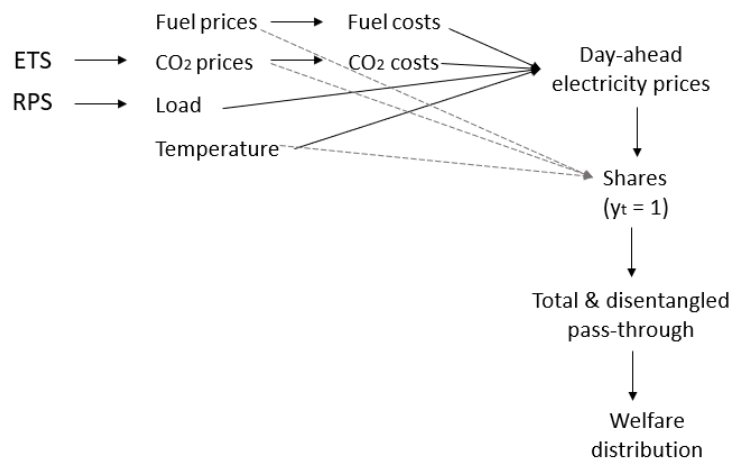


Figure 17: Causal diagram of drivers analyzed in this study